

QSTARZ[®]
Beyond Navigation

 **Bluetooth**[®]

BT-Q1300S

Sports Recorder[™]

66-CH Performance Bluetooth GPS-enabled Sports Recorder
Superior Track Logger, Navigation, Sports TRIPLE-IN-ONE



User's Manual

Table of Contents

1. OVERVIEW	1
2. PRODUCT NOTICE	1
3. FEATURES	2
4. PRODUCT SPECIFICATION	3
5. HARDWARE INTRODUCTION	4
5-1. APPEARANCE.....	4
5-2. HARDWARE FUNCTION	5
5-3. CHARGING BATTERY	5
5-5. LED INDICATORS	6
5-6. FUNCTION OF AUTO ON-OFF, AUTO LOG ON-OFF	7
6. SETUP BT-Q1300S	7
6-1. INSTALL THE DRIVER AND SOFTWARE FOR BT-Q1300S	7
6-2. INSTALL GOOGLE EARTH	11
7. START TO USE	11
7-1. FULLY CHARGE THE BATTERY WHEN USING AT THE FIRST TIME.....	11
7-2. CONNECT BT-Q1300S WITH YOUR PC	11
7-3. START THE SOFTWARE UTILITY	12
7-4. CHANGE LOG SETTING IN ACCORDANCE WITH YOUR SPORTS ACTIVITY	16
7-5. SWITCH TO EXTREME 5HZ SPORT MODE BY QSTARZGPSVIEW SOFTWARE APPLICATION	16
7-6. SAFETY NOTICE DURING SPORTS ACTIVITY	18
8. USEFUL REFERENCE APPLICATIONS ON THE INTERNET	20
8-1. LOCR GPS PHOTO	20
8-2. GPSTABEL.....	21
8-3. SPORTSMATE	22
8-4. JETPHOTO STUDIO	23
8-5. VEOGEO.....	24
8-6. RACECHRONO	25
9. TROUBLE SHOOTING	26
10. APPENDIX	31
10-1. ACTIVATE THE <i>BLUETOOTH</i> FUNCTION IN YOUR PDA/SMART PHONE OR PC.....	31
10-2. CREATE <i>BLUETOOTH</i> SETTING (WINDOWS MOBILE 5/6 FOR POCKET PC)	32
10-3. CONFIGURE THE GPS INTERMEDIATE DRIVER.....	35
10-4. START YOUR NAVIGATION SOFTWARE	37
10-5. SAFETY NOTICES	38

1. Overview

Qstarz is dedicated to exceed customer's expectation and give you the extraordinary experience beyond navigation ever more. Now, with the BT-Q1300S Sports Recorder™, which includes dual software: QTravel for travel log and photo geotag; sport suitable software: QSports™ for sports activities with sports armband, you are able to easily schedule your training plan, control your health status, and analyze your sports data.

Register your Qstarz Product:

Register your Qstarz product to get the latest news, software update, event, and product information.

http://www.qstarz.com/register/Product_reg/page.asp

2. Product Notice

On Handling

- If BT-Q1300S isn't used in temperature between -10 ~ 60 , its battery charging capability will decrease. Leave the BT-Q1300S far from heat or high temperature environment. And also, do not expose your BT-Q1300S in temperature higher than 140 /60 to prevent the battery inside BT-Q1300S from overheating, exploding or burning itself. The built in battery inside the BT-Q1300S should be recycled.
- Do not leave the unit staying below car's wind shield after car parked during hot summer season. Some position below wind shield may generate high temperature over 158 /70 . Such temperature may melt the unit and damage the battery.
- It is recommended to turn BT-Q1300S off in the hospital. Wireless GPS receiver may interfere with the medical equipments which use radio frequency.
- The manufacturer assumes no responsibility for any damages

and loss resulting from the use of this manual, or from deletion of data as a result of malfunction, dead battery, or from misuse of the product in any way.

- Please clean the unit with a dry and clean soft cloth. Do not use harsh cleaning solvents, chemicals, alcohol, or strong detergents.
- Do not attempt to open BT-Q1300S by yourself. Unauthorized hacking may damage the unit, and void your warranty.

On Battery & Safety

- Charging time is about 1 hour typically for this unit. We suggest disconnecting the unit from the cigarette charger or AC charger after the unit has been fully charged.
- When the unit is not in use or not charged, we suggest disconnecting the unit from the cigarette charger. Otherwise battery drain may result.
- Note that the built in battery cannot be charged outside the temperature range 0 ~ 45 °C.
- The charging time might be extended if you use the product while charging
- Do not heat or leave the unit in high temperature or direct sunshine for a long period of time as the built-in battery capacity will deteriorate, or will become unchargeable.

3. Features

- Adopt the MTK II chipset with high sensitivity -165dBm and Super High 66-Channel performance tracking
- Lower power consumption to 12hrs for travel/sports recording
- Record and manage your various exercise/sports
- Stand-Alone sports recorder to log up to 200,000 waypoints(*)
- Slim, Thin, Light, and Stylish design, only 62L x 38W x 7H (mm)
- Support button push manually to memorize your location

immediately

- **Support Multi-mode setting to record data (Vehicle, Bicycle, Jog)**
- **Fast Position Fix, Cold start 35s, Warm start 33s, Hot start 1s**
- **Auto On-Off function for smart power control**
- **Personal/Portable Navigation (PDA, Smartphone, PC, etc.)**
- **DGPS(WAAS+EGNOS+MSAS), QZSS support**
- **A-GPS support boosts the fix speed to 15sec faster**
- **Built-in Photo Geotag and visualized travel path**
- **Smart training plan and track for personal analysis**
- **Share your tracks of sports or travel with friends**
- **Be your Sports Mate for Health control**

4. Product Specification

General	
GPS Chip	MTK II GPS Module
Frequency	L1, 1575.42MHz
C/A Code	1.023MHz chip rate
Channels	66-CH Performance
Antenna (Internal)	Built-in patch antenna with LNA
Sensitivity	Tracking -165dBm
Datum	WGS84
Performance Characteristic	
Position	Without aid: 3.0m 2D-RMS
Accuracy	<3m CEP(50%) without SA (horizontal) DGPS (WAAS, ENGOS, MSAS): 2.5m
Velocity	Without aid: 0.1m/s, DGPS (WAAS, ENGOS, MSAS): 0.05m/s
Time	50 ns RMS
Cold/Warm/Hot Start	35/33/1 sec, average
Dynamic Condition	
Altitude	<18,000m
Velocity	<515m/sec
Acceleration	<4g
Protocol	

GPS Output Data	NMEA 0183 (V3.01) -GGA, GSA, GSV, RMC (Default) VTG, GLL(Optional)
Baud Rate	115,200 bps
Power	
Built-in rechargeable Li-ion battery	
Bluetooth	
Standard	Fully compliant with <i>Bluetooth</i> V1.2
<i>Bluetooth</i> Profile	Serial Port Profiles (SPP), Up to 10 meters
Others	
Size / Weight	62 (L) X 38 (W) X 7 (H) mm/ 22g
Operating Temperature	- 10 to + 60
Storage Temperature	- 20 to + 60
Charging	0 to + 45

5. Hardware Introduction

5-1. Appearance

1. Power Button
(ON/OFF/Enable LOG
mode/Disable LOG mode / Push
to LOG)
2. Power jack (mini USB type)
3. *Bluetooth* status LED (Blue)
4. Battery status LED
(Red/Green)
5. GPS status LED (Orange)
6. LOG status LED (Green)
7. Internal antenna



5-2. Hardware Function

Hardware Function	Description
Power Jack	Take the power cable and connect it to the power jack (mini USB type) for charging only
Power Button (On)	Press power button and hold for 4 sec to power BT-Q1300S on.
Power Button (Off)	Press power button and hold for 4 sec to power BT-Q1300S off
Power Button (Enable Log mode)	Log is on when BT-Q1300S is powered on by pressing power button and hold for 4 sec. The LOG status LED (green) would blink, and start to log.
Power Button (Disable Log mode)	After power on BT-Q1300S, press power button and hold for 2 sec to disable log mode. Then BT-Q1300S would stop logging with the LOG status LED (green) Off. Press power button and hold for 2 sec to enable log again.
Power Button (Push to Log)	Press power button once to push to log the favorite Point of Interest.

5-3. Charging Battery

For the first time using the BT-Q1300S, please charge battery until it is fully charged. Take the power cable and connect it to the power jack (mini USB type) and recharge through USB cable, travel charger, or car cigarette adaptor. This will begin to charge the battery. Charging time is about 1 hours typically.







- When the Power LED is Red, battery power is in low status. Please recharge.
- When the Power LED is Green, the battery is under charging mode.
- When the Power LED is blinking (Green), the battery is fully charged.

NOTE 1: The Cigarette Adaptor can only be used to charge BT-Q1300S. Please don't make use of it with devices other than BT-Q1300S.

NOTE 2: Please recharge the battery on a regular interval if the unit is not used for a long time.

5-5. LED Indicators

LED Status		Flash	ON	OFF
Power (Red/Green)		Fully charged (Green) Low Power (Red)	Recharging (Green)	
Bluetooth (Blue)		<u>Flash per 2 sec.:</u> Bluetooth connected and transmitting Mode <u>Flash per 5 sec.:</u> Power saving mode	Not connected /Pairing	GPS not powered / Log Mode is on
GPS (Orange)		GPS position is fixed, Navigation	Detecting Satellite, GPS position not fix	GPS not powered
Log (Green)		Log Mode is on <u>Flash per 2 sec.:</u> Low memory <u>Flash 3 times:</u> POI(Point of Interest) is recorded	Memory is full	Log Mode is off

5-6. Function of Auto On-Off, Auto Log On-Off

Auto On-Off (Power saving mode): BT-Q1300S will automatically enter sleeping mode after the *Bluetooth* connectivity is turned off, so the Blue LED will turn to flash every 5 seconds. Thus you can always power it on with very low power consumption.

Under power saving mode, when detecting *Bluetooth* is being connected, BT-Q1300S will auto wake up itself and the blue LED will turn to flash every 2 seconds and GPS Orange LED will be also On.

Note: Power saving mode would not function when log is enabled or connected with PC.

Auto Log On-Off: Under Log mode, BT-Q1300S will automatically stop log after the GPS is not fix. However, the LED will not indicate it since it works in background. As long as the GPS is fix again, BT-Q1300S will start to log. Thus you can save very much memory during your travel.

6. Setup BT-Q1300S

6-1. Install the driver and software for BT-Q1300S

System Requirement (Only compatible with Microsoft Windows XP / Vista)

Minimum System Requirement	Recommended System Requirement
<ul style="list-style-type: none">- Windows XP or Vista- Pentium 3, 500Mhz- 128M RAM- 128MB disk space	<ul style="list-style-type: none">- Windows XP- Pentium 4 2.4GHz+ or AMD 2400xp+- 512M RAM- 2 GB of free disk space

<ul style="list-style-type: none">- Network speed: 128Kbits/sec- 3D-capable video card with 16Mbytes of VRAM- 800x600, "16-bit High Color" screen	<ul style="list-style-type: none">- Network speed: 768 Kbits/sec or better (DSL/Cable)- 3D-capable video card with 32 MB of VRAM or greater- 1280x1024, "32-bit True Color" screen
---	--

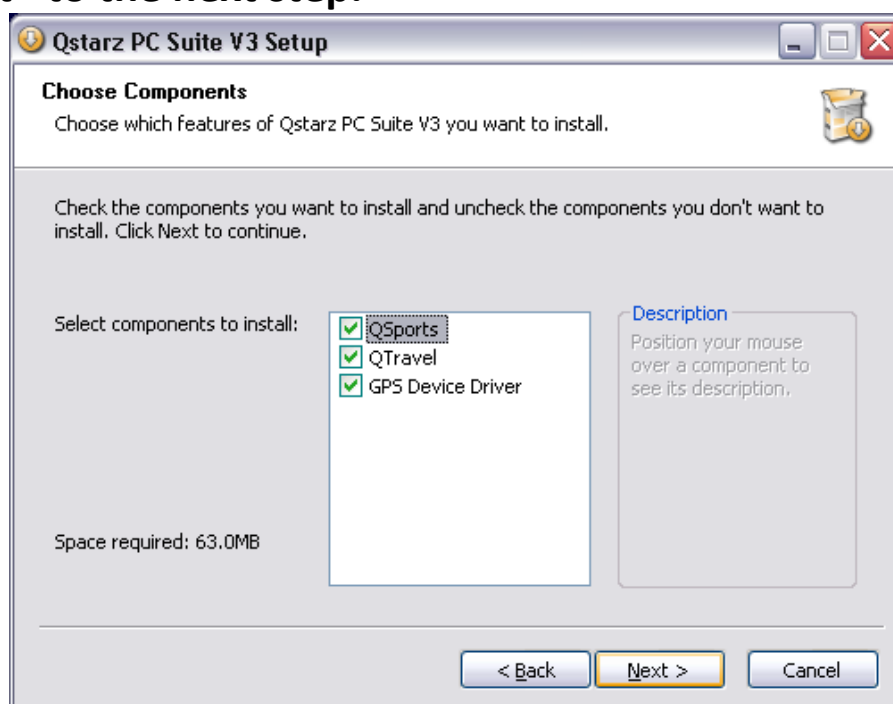
1. Please insert the Software CD to your computer. The autorun window will appear and please select Q1300S. Please press "Install PC Suite" to install the main program. If the autorun windows did not appear, please browse the CD and find the folder "Utility\Qstarz PC Suite\". Double click "Qstarz_PC_Suite_installer_M.exe" to install the software utility package. This software package contains USB driver, QTravel™/ QSports™ inside.



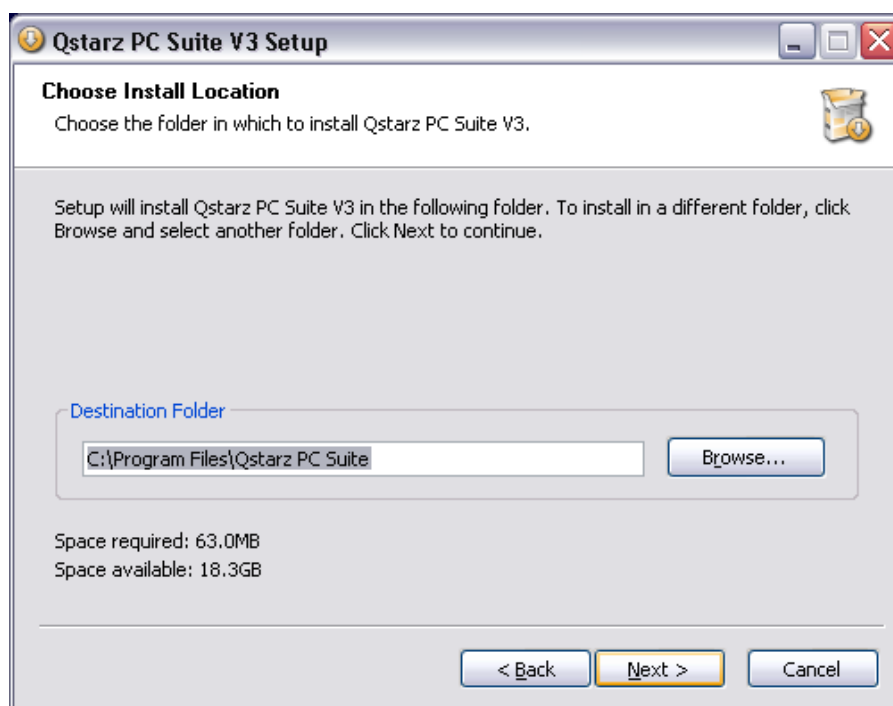
2. System would pop up the utility installation dialog. Please click <Next> for the next step.



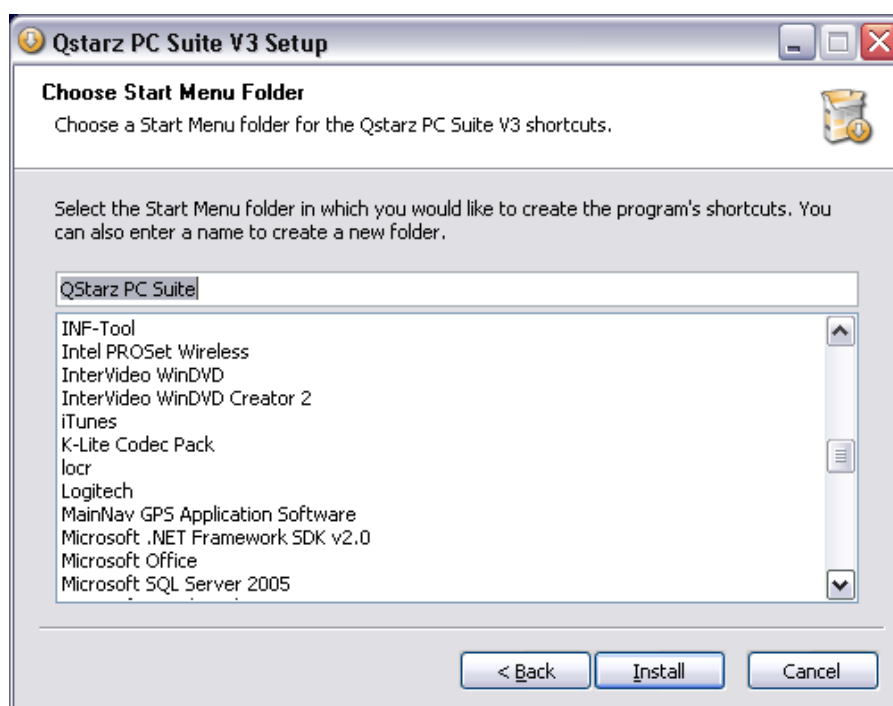
3. Please select “QSports” “QTravel” “GPS Device Driver”, and then click <Next> to the next step.



4. Click <Next> if you want to install the program in default target folder or you can click <Browse> to change the install folder.



5. Give a folder's name for quick links in start menu and click <Install> to install the program.



6. When the utility installation is completed, please click <Finish> to reboot. Or you can also reboot later by selecting "No, I want to reboot later by myself."



6-2. Install Google Earth

BT-Q1300S supports showing your travel path directly on Google Earth. Please go to <http://earth.google.com> for the free download of Google Earth, and then install it to your computer. For the operation procedure of Google Earth, please refer to <http://earth.google.com/support/>

7. Start to use

7-1. Fully charge the battery when using at the first time

A fully charged battery can last up to 12 hours continuously operation.

7-2. Connect BT-Q1300S with your PC

1. Power on BT-Q1300S

2. Please connect BT-Q1300S with your PC by mini USB cable.

7-3. Start the software utility

NOTE 1: Before starting the software utility, please make sure that the USB driver and the software utility has been installed properly.

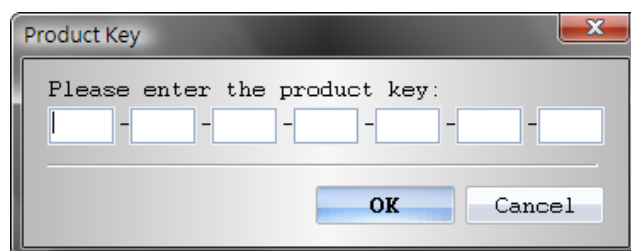
NOTE 2: QSports and QTravel only supports BT-Q1300S. Any intention to use QSports and QTravel connecting GPS units other than BT-Q1300S would result in software disconnection automatically.

QSports™ - Your Virtual Sports Coach

QSports™ is software with database structure

QSports™ can record, manage, and analyze all your daily/weekly/monthly activities with various sports gear such as Cycling, Running, Jogging, Climbing, Skiing, etc. Train yourself by means of QSports™ statistics to have good health control. Different sport gear will generate corresponding category for better management and analysis.

1. Click from <Start> / <All Programs> / <Qstarz PC Suite> / QSports Users have to input product key at the first time of use. The product key is located on the envelop of the software CD.



Important Notice: Do not lose your Product Key. Keep the packaging, or write the number down and keep it in a safe place.

2. Add New User

QSports™ supports multiple users. User information includes “User

Name”, Gender, Birth Date, and Weight. In order to get correct calories calculation, please fill in the correct personal data.

3. <File> \ < Import Wizard >

Import Wizard can guide you to load the tracks from GPS device easily.

- 3.1 Select default “Sport Type”. QSports will create tracks with the default sport type, and users can change the sport type after import.
- 3.2 QSports™ will automatically detect the COM port and baud rate and load in the GPS tracks.

NOTE: Make sure to Power on GPS unit first before connecting with computer for downloading tracks.

4. <File> \ <Export Wizard>

Export Wizard can guide you to proceed export process easily.

- 4.1 **HTML:** Pack selected tracks and photos into editable html files or a single easy sharing mht file.
- 4.2 **Google Earth:** KML and KMZ are Google Earth files formats. KML file contains detail waypoints and tracks info. KMZ file contains both simple track and photos info.
- 4.3 **Track File:** Export tracks and placemarks as GPX, NMEA, and CSV file formats.

For detail QSports functionality, please refer to QSports User’s Manual attaching with Software.

QTravel™:

QTravel™ is the best Geotagging software to integrating your travel track and photo together easily. Support track editing, playback, and import/export Wizard.

- 1. Click from <Start> / <All Programs> / <Qstarz PC Suite> / QTravel
Users have to input product key at the first time of use. **The product key is located on the envelop of the software CD.**

2. <File> \ < Import Wizard >

Import Wizard can guide you to proceed the Geotag process easily.

- 2.1 The Import Wizard will jump out every time during

program startup. You can also launch it by clicking <File> \ <Import Wizard> or the quick link icon.

2.2 Select the method to import the tracks from device.

<Import tracks and photos into new trip>

Create a new trip to save the tracks

<Select trip to import tracks and photos>

Save the tracks into an existed trip

<Import whole trip from project file (*.itm)>

Import a trip from a project file saved by Travel Recorder software

2.3 QTravel™ will automatically detect the com port and baud rate and load in the GPS tracks.

2.4 A track list window will be popped up. Select the tracks to import.

2.5 Please select the photo folder to import photos for geotag. You can also skip this step by clicking <Finish> directly and then there will be only tracks shown on Google Map.

NOTE: Make sure to Power on GPS unit first before connecting with computer for downloading tracks.

3. <File> \ <Export Wizard>

Export Wizard can guide you to proceed export process easily.

3.1 HTML: Pack selected tracks and photos into editable html files or a single easy sharing mht file.

3.2 Google Earth: KML and KMZ are Google Earth files formats. KML file contains detail waypoints and tracks info. KMZ file contains both simple track and photos info.

3.3 Track File: Export tracks and placemarks as GPX, NMEA, and CSV file formats.

3.4 Project File: Export whole trip as a Travel Recorder software compatible project file.

4. <File> \ <Download AGPS Data>

Update the AGPS data from internet assistance server to boost warm start speed to 15sec.

A-GPS is a system where outside sources, such as an assistance server and reference network, help a GPS receiver boosts

performance beyond that of the same receiver in a stand-alone mode by downloading the almanac data from an assistance server.

Note1: A-GPS can boost GPS warm start speed to always lower than 15sec fix after the first fix. The A-GPS efficiency will decrease when time goes by. If it expires, you would have to download almanac data again because the acceleration efficiency of fix will become totally ineffective.

Note2: Please don't update the almanac data via Bluetooth interface.

For detail QTravel functionality, please refer to QTravel User's Manual attaching with Software.

Register your Product Key:

You can register your product key in “software -> about -> Input Product Key” by an email account. This email with a registered product key will be saved in Qstarz database. You can check your product key by presenting the corresponding email to Qstarz at any time.

Update the Software:

Please always go to Qstarz download page to check if there is any latest software update.

<http://www.qstarz.com/download.htm>

Please uninstall the old version before installation.

Note: The license of Qstarz PC Suite is different from that of stand-alone installation package of QTravel™. Thus you are unable to update QTravel software only. Please make sure to download the PC Suite installation package for update.

7-4. Change log setting in accordance with your sports activity

The default log setting is logging every 5sec a waypoint which is sufficient for common usage, but for sports activities, you may need higher accuracy of sports data for analysis. We recommend changing the log setting to **log every 1sec a waypoint** at “QTravel™” or “QSports™” -> “Config GPS” -> “GPS Log Setting”

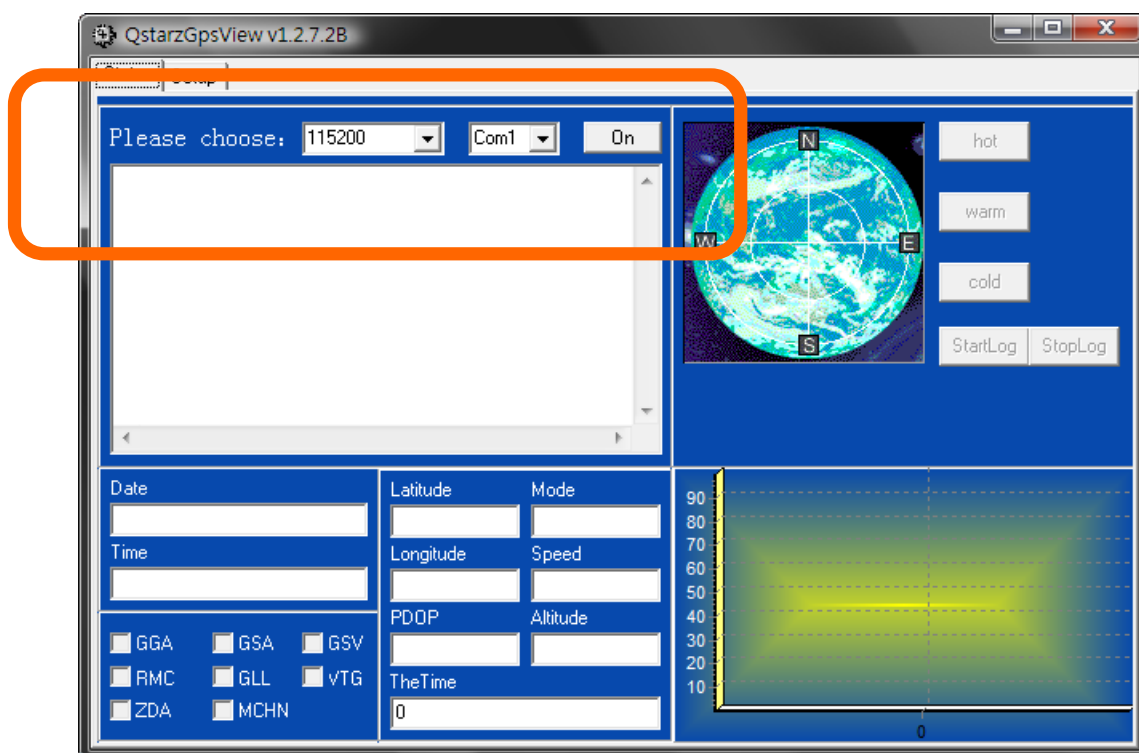
7-5. Switch to eXtreme 5Hz sport mode by QstarzGpsView software application

eXtreme 5Hz sport mode allows your GPS to get the same or even higher positioning and accuracy ability during eXtreme sports.

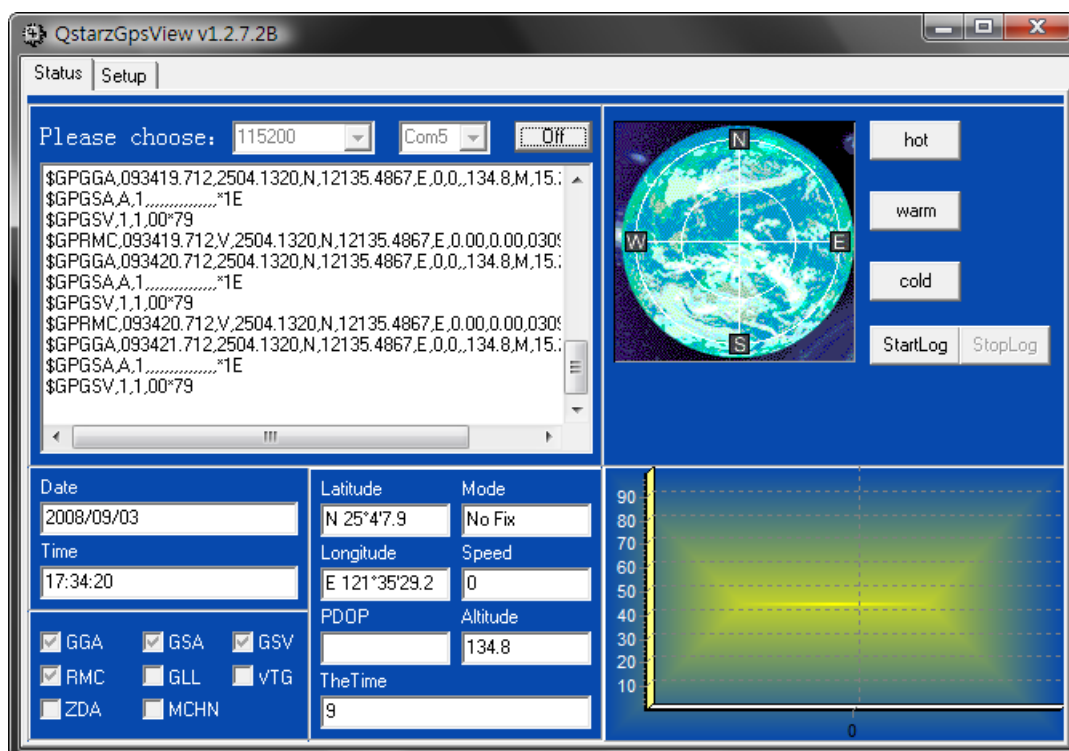
NOTE1: The default setting for Q1300S is 1Hz. If you are no longer to use eXtreme 5Hz sport mode, please switch it back from software.

NOTE2: The update rate stands for the rate of GPS refreshing nmea data received from satellites. Thus 5Hz update rate only means GPS can receive or refresh nmea data 5 times per second, and it's irrelevant with 5Hz logging.

1. Connect BT-Q1300S with your PC by mini-USB cable.
2. Switch BT-Q1300S on.
3. Execute QstarzGpsView.exe (GPSView is in software CD or can be downloaded from our official website)
4. Select COM port (To find the valid com port, please go to <Device Manager> and expand the <Ports (COM & LPT)> and check “GPS USB Serial Interface Driver”) and set the baud rate to **115200**.

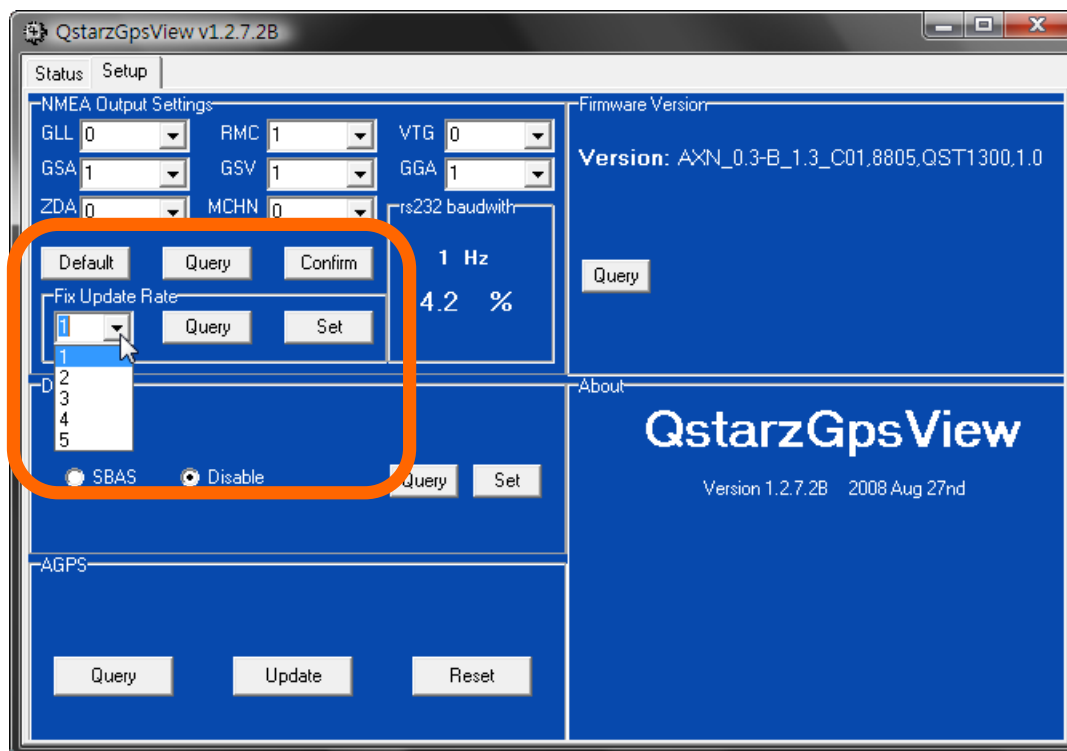


5. Click **On** button to establish the communication between BT-Q1300S and your PC. If the connection is successful, the NMEA stream will keep showing.



6. Click **Setup** tab, and you can change to eXtreme Sport mode under

Fix Update Rate. The higher number means the device can bear extremer environment. After select an update rate, click **Set** to save the setting.



7-6. Safety Notice during Sports Activity

Please use Sports Armband to fix the GPS device on your body to prevent it from shaking. Shaking will result in unstable satellite signal reception.

Qstarz Sports Armband



The proper usage of Sports Armband and Q1300S

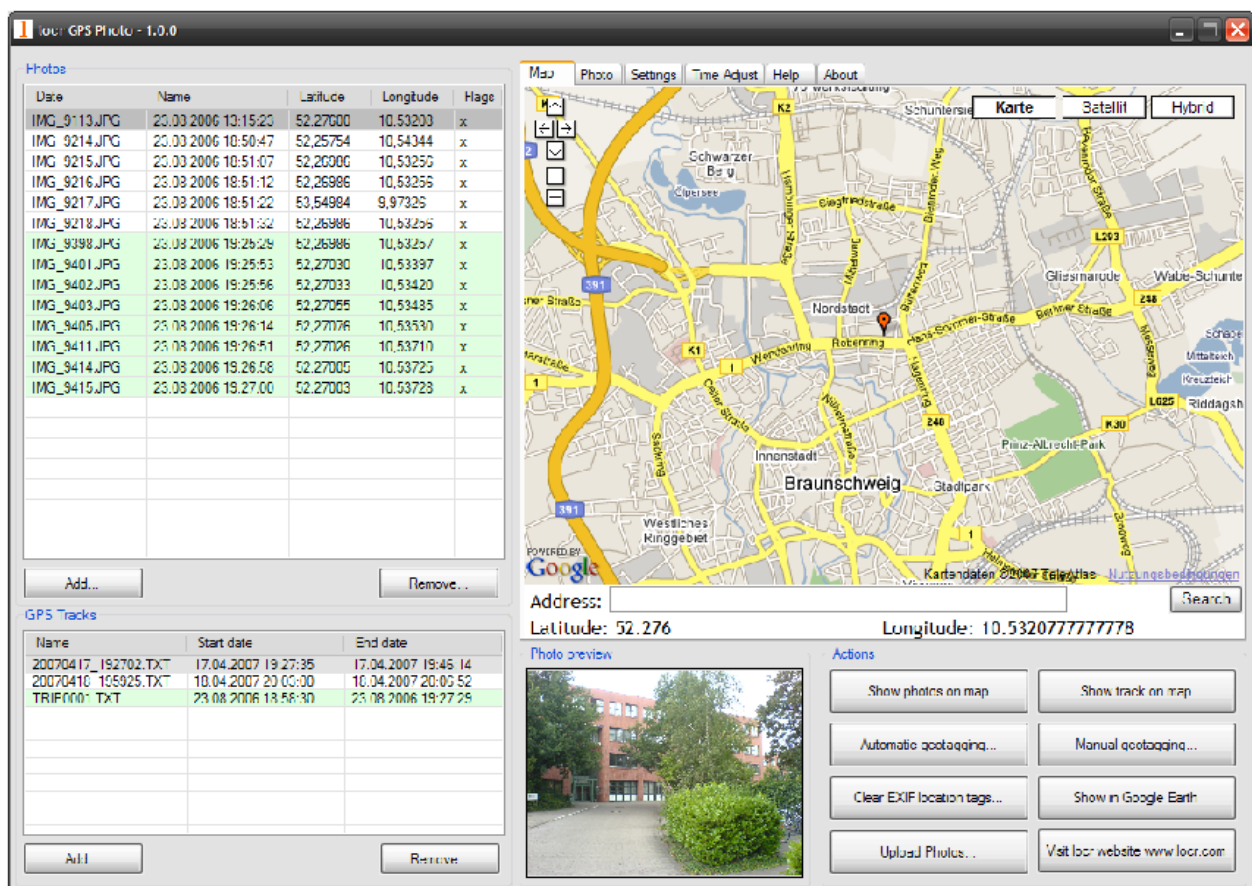


8. Useful reference Applications on the internet

8-1. locr GPS Photo

BT-Q1300S is the member of locr GPS Photo certified product. This utility can integrate travel log and digital photos by date/time to show your photos on the map directly. After the integration, the current GPS coordinates also can be imported to your digital photos for the further application. Please find the installation file for Windows XP/Vista or Symbian system in Qstarz GPS CD. Go to <http://www.locr.com> for the further information.

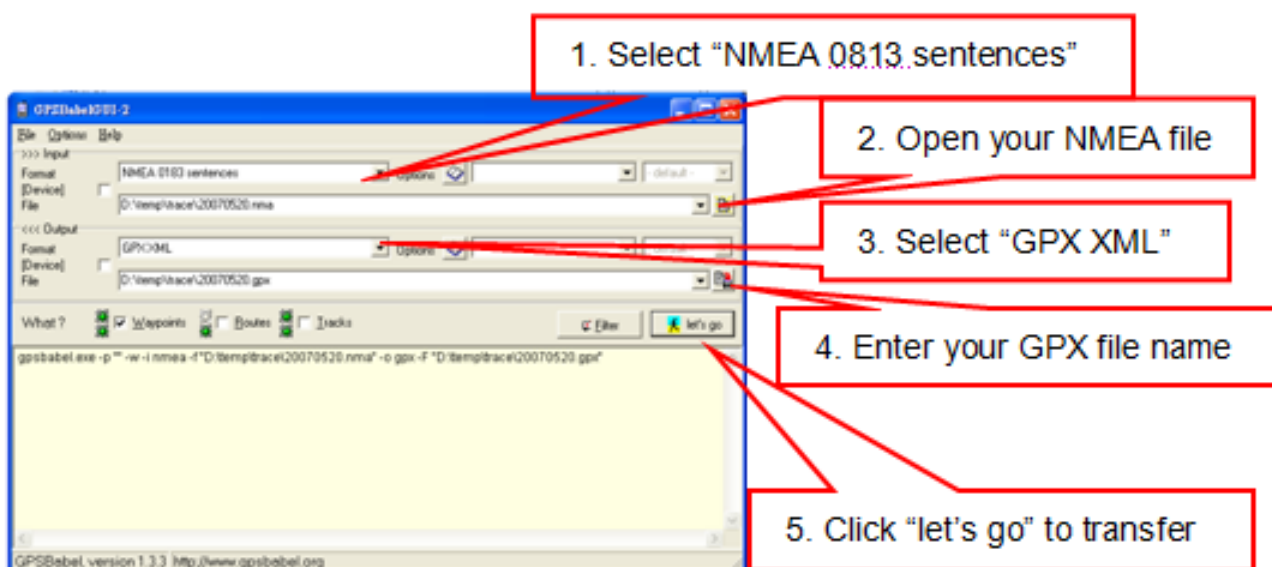
Compatibility: Windows XP/Vista, Windows Mobile, Symbian, Mac



8-2. GPSTabel

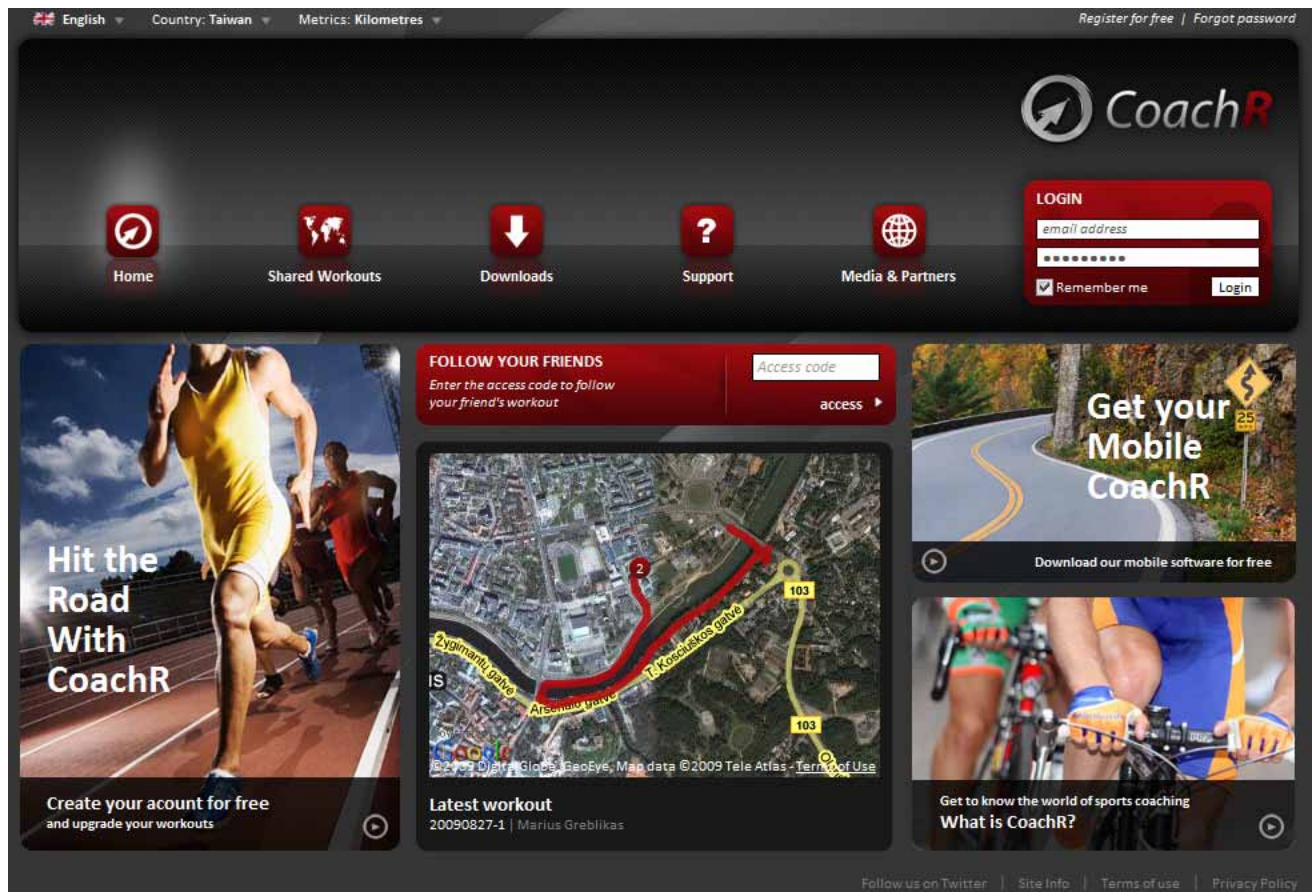
This utility can transfer your NMEA file to GPX file or other format. Please go to <http://www.gpsbabel.org> for free download.

Compatibility: Windows XP/Vista, Mac, Linux.



8-3. CoachR

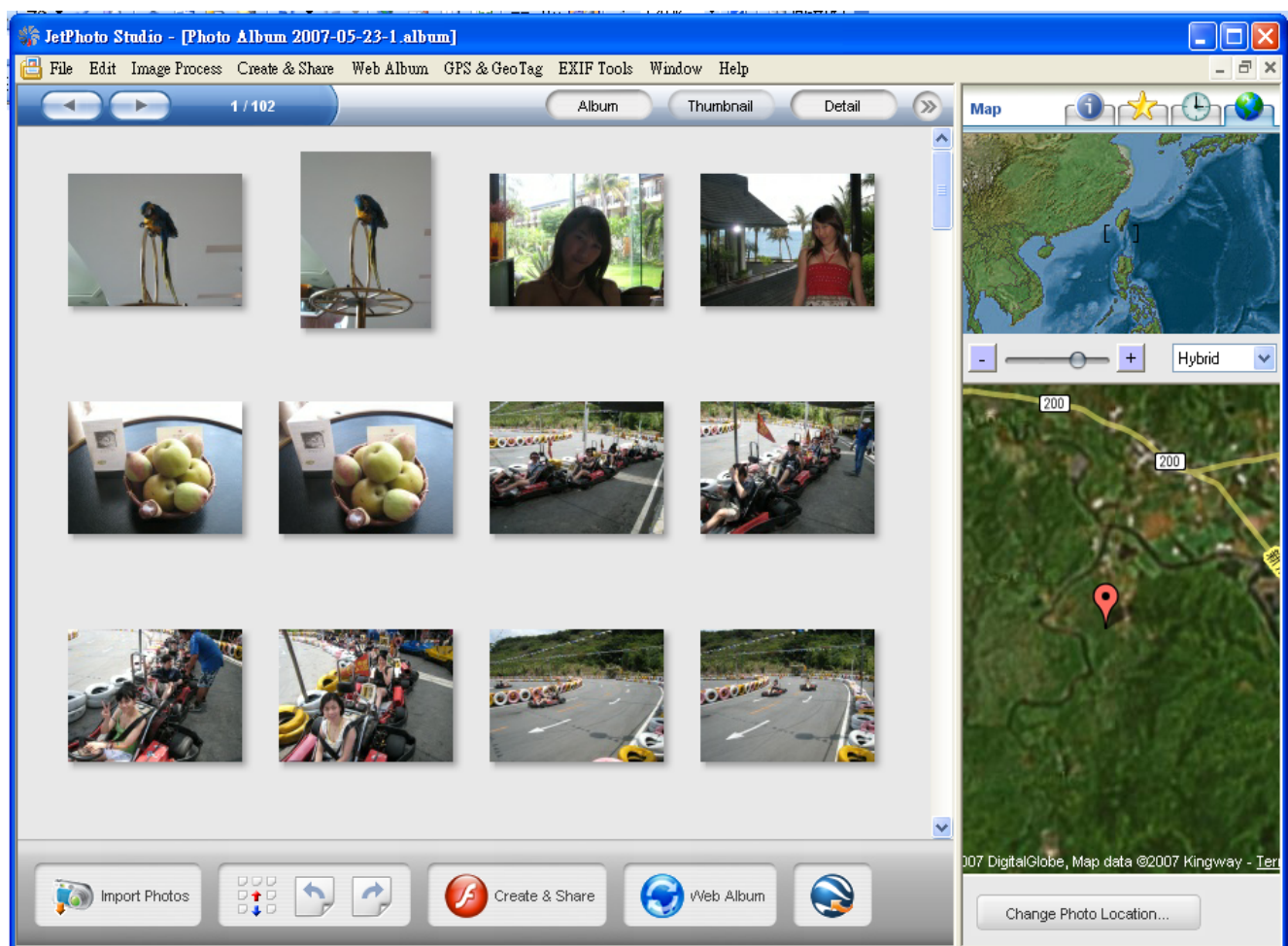
This web site can share your travel log with your friends. Before sharing your trip, please apply a new account first. Please go to <http://www.coachr.com> for the further information.



8-4. JetPhoto Studio

This utility can integrate travel log and digital photos by date/time to show your photos on the map directly. After the integration, the current GPS coordinates also can be imported to your digital photos for the further application. Please go to <http://www.jetphotosoft.com> for free download.

Compatibility: Windows XP/Vista, Mac



8-5. VeoGeo

This website allows you to combine travel log and video by date/time to show your video on the map directly. Please go to www.veogeo.com for further information and register for a free new account.

Login Register

VeoGeo BETA Browse Blog Forum Upload

Search for activities
Advanced Search

CityCat - Downstream - Brisbane

Ads by Google

Mountain biking Alps
Wide number of local cycling paths
Beautiful nature
www.slovenia.info

Mountain Bike Accessories
Buy Now, 15% Off
Your 1st Purchase
Free Shipping
Today Huge Savings
www.sagecycles.com

Prescription Sunglasses
for cyclists Wrap
Rx specialists
www.bicyclerx.com

Outdoor Instructor Course


The screenshot displays the VeoGeo website interface. On the left, a video player shows a CityCat ferry on the Brisbane River. Below the video is a progress bar and a speed indicator showing 'Current Speed: 11.77 km/hr (7.31 miles/hr)'. To the right of the video is a map of Brisbane with a blue line indicating the CityCat route along the river. Below the map is a graph showing speed and elevation over time. The graph has two y-axes: 'Elevation (m)' on the left (0 to 30) and 'Speed (km/hr)' on the right (0 to 30). The x-axis represents time from 0 to 500 seconds. The speed line is a flat blue bar at approximately 11.77 km/hr, and the elevation line is a green line showing the river's profile.

8-6. RaceChrono


RaceChrono is a GPS based lap timing software for Nokia S60 smart phones. It can be used to measure lap times on almost any vehicle and track. It can be used to measure lap times for example for motorbikes, bicycles, cars, water jets and quadbikes. The most important of all, it supports 5Hz update rate.

Please find the installation file in Qstarz GPS CD or go to <http://www.racechrono.com> for the further information.

Compatibility: Symbian

**RaceChrono**

[Home](#) [About](#) [News](#) [Manual](#) [Download](#) [Forum](#)



RaceChrono is a GPS based lap timing software for Nokia S60 smart phones. It can be used to measure lap times on almost any vehicle and track. It can be used to measure lap times for example for motorbikes, bicycles, cars, water jets and quadbikes.

Version 1.00
[Download](#)

RaceChrono version 1.00 released!

I'm very happy to announce that the version 1.00 is now released! It has simplified live timer, improved optimal lap browsing, better OBD-II support and session exports in GPX format. Also it features many user interface improvements!

FAQ: Which Phones does RaceChrono work on?

A: RaceChrono works on phones with Nokia S60 2nd edition feature pack 1 and above, or Nokia S60 3rd edition.

FAQ: How does RaceChrono work?

RaceChrono uses GPS position data to determine lap times and performance.

[Read more](#)

9. Trouble Shooting

Question	Answer
Can BT-Q1300S be used to navigate when travel log is on?	Yes, you can use BT-Q1300S to navigate when travel log is on simultaneously.
How can I know if my memory is full?	If you see the Log LED is steady lighted up, which means the memory is full.
Can the logged data be downloaded by <i>Bluetooth</i> ?	Yes, but due to the bandwidth of Bluetooth, the download speed will be slower than USB interface.
My navigation software does not support baud rate 115,200. How can I make it work via USB interface with Qstarz GPS?	When Qstarz GPS is connected via USB interface, the baud rate is fixed and should be set to 115200. If your software does not support this baud rate, please connect the device via Bluetooth interface whose baud rate is changeable.
My Q1300S crashed. How can I make it back to normal status?	Please leave it until it drains out of battery and then Q1300S will be back to normal status.
When I use QTravel SW to read log from device, it appears "No Data in Device." Why?	Q1300S will not log invalid GPS data (GPS with no fix). So please make sure to log valid GPS data under open sky environment. If the logger still can not log, please perform a reset in QTravel SW -> Config GPS or QSports -> Config GPS -> Reset

Trouble Shooting of Software:

Error Message	Possible Reason	Solution
No Data in Device.	Log memory error	Perform a reset in QTravel SW -> Config GPS.
	Not log valid GPS fix data	The program will rule out the GPS not fix data, so make sure to log valid GPS data under open sky environment.
Failed to read data from GPS module!	Invalid operation	1. Unplug and plug in the USB cable. 2. Switch off and on the device
	Com port detection error	1. Manually select connection com port at Config GPS and check connection com port at Windows Device Manager -> Com&LPT -> GPS USB.....or CP210X..... 2. Change another USB port for connection

	Driver not installed properly	<p>Reinstall the driver.</p> <p>For Q1000P, Q1200, Q1200Ultra, Q2000: Please remove the USB driver from Control Panel -> Remove Program -> Silicon Laboratories CP210x USB to UART Bridge..... And reinstall the driver.</p> <p>For Q1000X, Q1300, Q1300S: Please remove the USB driver when the device is connected to PC and find "GPS USB Serial Interface Driver" at Device Manager and right click on it and press Uninstall. Then the confirmation dialog will appear and please select "Also delete device driver software." And reinstall the driver.</p>
Switch is not turned on or incompatible GPS device!	not turn on the device	<ol style="list-style-type: none"> 1. Turn on the device. 2. Unplug and plug in the USB cable.
	Incompatible GPS device	<p>Check the compatibility of your Qstarz GPS module</p> <p>QTravel is compatible with following Qstarz GPS:</p> <p>Q1000P, Q1000X, Q1200, Q1200Ultra, Q1300, Q1300S, Q2000</p>
Failed to connect GPS Module!	GPS not correctly connected	Follow the standard operation procedure in user's manual for making the connection
	Com port detection error	<ol style="list-style-type: none"> 1. Manually select connection com port at Config GPS and check connection com port at Windows Device Manager -> Com&LPT -> GPS USB.....or CP210X..... 2. Change another USB port for

		connection
	Driver not installed properly	<p>Reinstall the driver.</p> <p>For Q1000P, Q1200, Q1200Ultra, Q2000: Please remove the USB driver from Control Panel -> Remove Program -> Silicon Laboratories CP210x USB to UART Bridge..... And reinstall the driver.</p> <p>For Q1000X, Q1300, Q1300S: Please remove the USB driver when the device is connected to PC and find "GPS USB Serial Interface Driver" at Device Manager and right click on it and press Uninstall. Then the confirmation dialog will appear and please select "Also delete device driver software." And reinstall the driver.</p>
	GPS USB connection chip is faulty	<ol style="list-style-type: none"> 1. "CP210x..." or "GPS USB..." does not appear at Windows Device Manager -> Com&LPT when the device connected with PC. 2. Request a RMA to the store you bought from.
Failed to write data into GPS Module!	Invalid operation	<ol style="list-style-type: none"> 1. Unplug and plug in the USB cable. 2. Switch off and on the device 3. Try to read log again and don't unplug during read log process

Invalid product key		<p>Please double check the combination of the key or execute windows program “Regedit.exe” and find “HKEY_CURRENT_USER\Software\Qstarz Applications\TravelRecorder\OptionsSetting\ RegProdKey_QStarz” or “HKEY_CURRENT_USER\Software\Qstarz Applications\QSports\OptionsSetting\ RegProdKey_QStarz” and directly paste your product key. The product key should be in the format of XXXX-XXXX-XXXX-XXXX.....</p>
Product key lost		<p>The software key application is easy. Just email your product serial number (not FCC ID) to us to get a new key. But please notice that this key application is just allowed once. So it’s important to keep the key in safe.</p>

*Every time when you feel the device works abnormally, please perform both hard and soft reset to let device back to normal status.

**If above method can not solve your problem, the device may be defective. Please request a RMA to the store you bought from.

10. Appendix

Navigate as a *Bluetooth* GPS Receiver with Handheld devices

10-1. Activate the *Bluetooth* function in your PDA/Smart phone or PC

Before activating the *Bluetooth* function in your PDA/PC, please switch BT-Q1300S on for pairing and check if your device is equipped with *Bluetooth* function. If not, you may need to acquire an optional CF/SD *Bluetooth* card or *Bluetooth* dongle.

NOTE 1:

BT-Q1300S would be identified as "Qstarz GPS" under Bluetooth Manager. In further use, you just need to click it to connect to this GPS Sports Recorder.

NOTE 2:

The pairing procedure is required to execute in the first time only. And the pass code is "0000" if required.

NOTE 3:

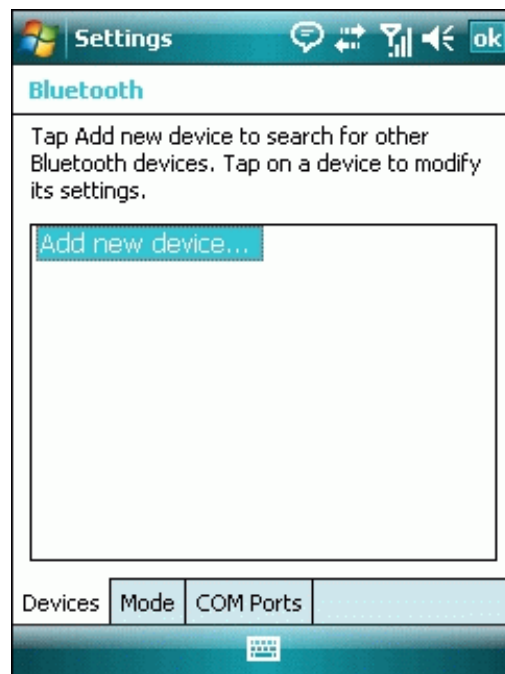
Select correct com port and baud rate : 115200 under your navigation software (Most of navigation software can auto-detect Bluetooth Com port, so you do not need to setup manually).

NOTE 4:

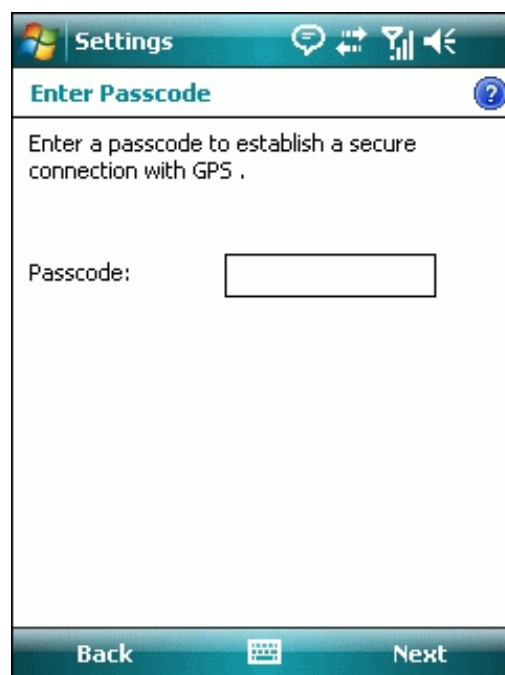
Please delete all other devices except Q1300S in your pairing list.

10-2. Create *Bluetooth* Setting (Windows Mobile 5/6 for Pocket PC)

1. Switch **BT-Q1300S** on.
2. From the **Start** menu, click **Settings**.
On the **Connections** tab, click the *Bluetooth* icon
3. On the **Devices** tab, click **Add New Device...** The settings application will search for your device. When it is found, click **Next**.



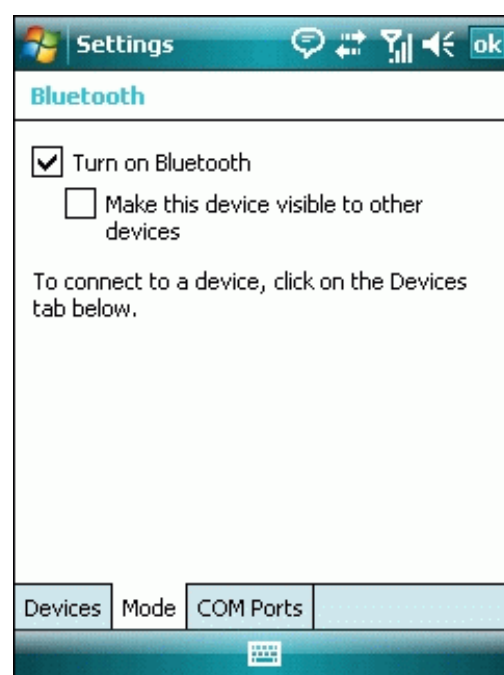
4. Enter the passcode "0000" and click **Next**.



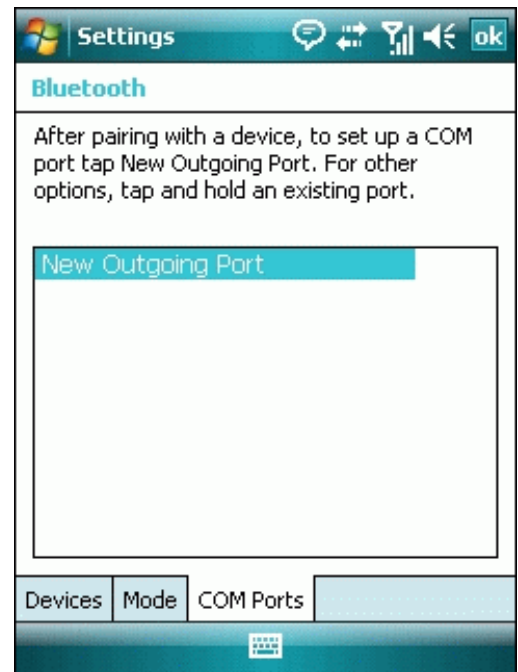
5. On the **Partnership Settings** screen, select **Serial Port** and click **Next**



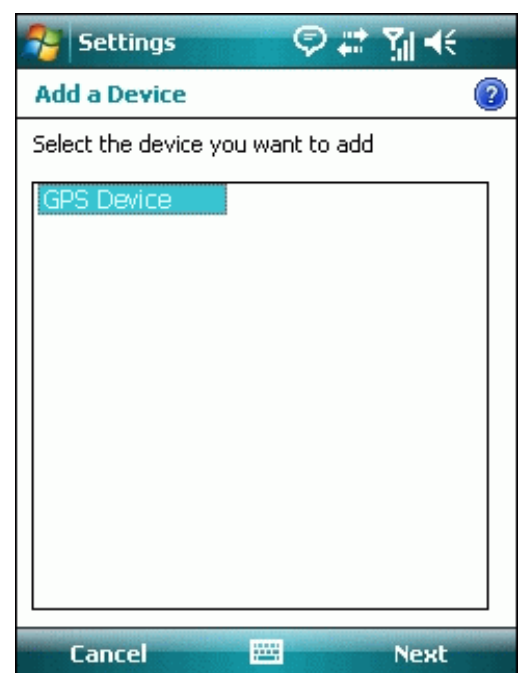
6. Select the **Mode** tab and check the **Turn on Bluetooth** checkbox if it is not already checked.



7. Select the **COM Ports** tab and click **New Outgoing Port**

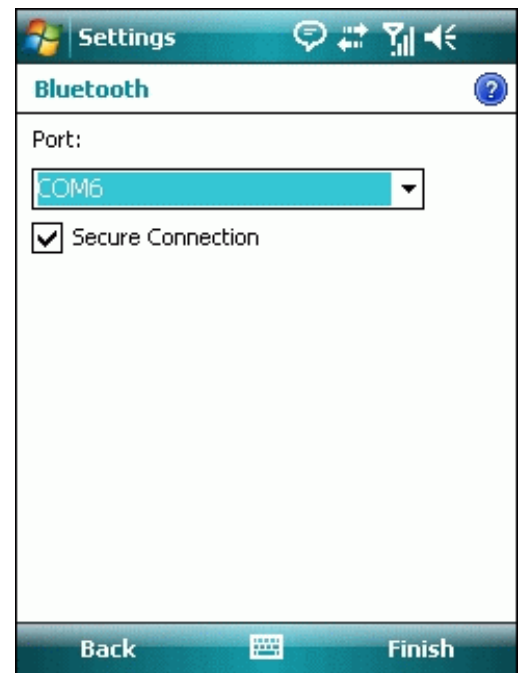


8. Select “Qstarz GPS” from the **Add a Device** list and click **Next**



9. Uncheck **Secure Connection**. From the **Port** drop-down list, select a port number. Remember the port you choose. You will need it when you configure the GPS Intermediate Driver.

10. Click **Finish** and exit the *Bluetooth* Control Panel item.

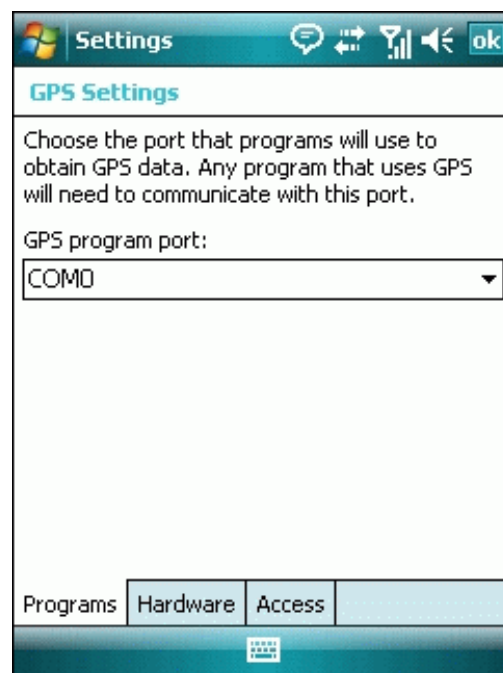


10-3. Configure the GPS Intermediate Driver

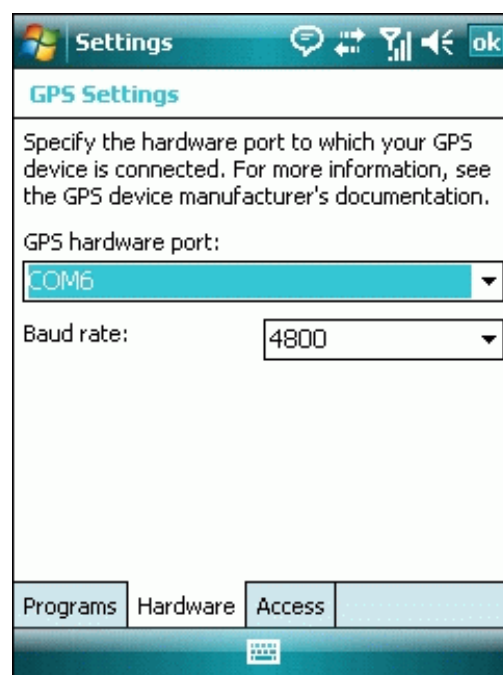
The GPS Intermediate Driver is a software layer between a Windows Mobile application and the GPS hardware drivers. This allows applications to work with a variety of GPS hardware. The GPS Intermediate Driver uses the registry to determine what COM port should be used to communicate with the GPS hardware. The recommended way to configure the registry to work with your GPS device is the GPS Settings icon

1. From the **Start** menu, click **Settings**. On the **System** tab, click the **External GPS** icon. On some devices, this item has a different name.

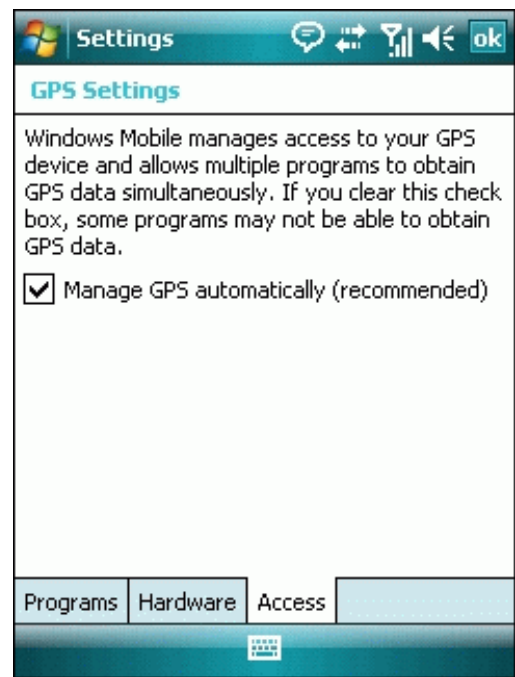
2. On the **Programs** tab, select any available COM port from the **GPS Program Port** drop-down list. The GPS data sent through the GPS Intermediate Driver is streamed to applications through this port. This should not be the same port that your GPS receiver is configured to use. If your application can't receive GPS data stream, leave **GPS Program Port** for empty. Applications will use **GPS Hardware Port** as communication port.



3. On the **Hardware** tab, select the COM port BT-Q1300S is configured to use from the **GPS Hardware Port** drop-down list



4. On the **Access** tab, make sure that the **Manage GPS Automatically** checkbox is checked



10-4. Start your navigation software

Activate your navigation software and make sure to select the correct “COM Port”.

NOTE 1:

In the map software such as TomTom, you might need to change preference and set “Other Bluetooth GPS Device” according to PDA/phone model. In some case please consult map software company to vary the setting if you have issue on positioning.

NOTE 2:

There might be specific setting requirement per navigation software. Such as Tomtom, please delete other GPS settings under Tomtom software, and keep one only.

10-5. Safety Notices

R&TTE / CE Notice

This device is confirmed to comply with the requirements set out in the Council Directive on the Approximation of the Laws of the Member States relating to Electromagnetic Compatibility (89/336/EEC), Low-voltage Directive (73/23/EEC) and the Amendment Directive(93/68/EEC), the procedures given in European Council Directive 99/5/EC and 89/336/EEC.

The equipment was passed. The test was performed according to the following European standards:

EN 300 328-2 V1.2.1 (2001-08)

EN 301 489-1 V1.4.1 (2002-04) / EN 301 489-17 V1.2.1 (2002-04)

EN 50371: 2002

EN 60950: 2000

FCC Notice

This device complies with part 15 of the FCC rules. Operation is subject to the following two conditions:

1. This device may not cause harmful interference.
2. This device must accept any interference received, including interference that may cause undesired operation.

Spec. is subject to change without prior notice.

All rights reserved. All registered trademark is belong to their respected companies.